



planet  
PRESS

CREATIVE



print



direct mail



creative



logistics

# **we are** **Planet Press.**

Planet Press is a creative agency providing experienced graphic design, quality bespoke printing and warehousing services with excellent customer service.

Our creative design studio can cater for all your design needs. Everything from business cards and flyers to posters, infographics and online digital graphics, our attention to detail is second to none and has allowed us the opportunity to design for some of Australia's leading brands.

Our wealth of experience and creative methods allow us to work closely with you and tailor each project to suit your needs and budget.

We love transforming outdated designs and creating fresh new concepts that will help your business grow.

We're Australian, renowned for great service and we care about you.



the children's hospital

# 'the bandaged bear'



## AMELIA'S STORY

The girl who is giggling again

**YUM!**

Cooking with allergies

**PUR LO**

N

## Adventurous Amelia Making Magic Again

Amelia and her little brother Patrick are giggling again and their mum says thank you.

"We are thankful every day that The Children's Hospital at Westmead exists and is such a wonderful facility."

**S**ix-year-old Amelia's mother Nicole closely remembers the day her daughter was diagnosed with an aggressive brain tumour in March 2010. "We went from having a healthy, normal three-year-old to having a three-year-old with an aggressive, life-threatening form of cancer in a matter of hours," she said.

It had only been a few weeks since they had noticed a small lump near Amelia's chin and after a series of tests with their GP they found themselves at The Children's Hospital at Westmead.

"It was without question the most difficult day of our lives. We had never spent a single night away from either of our children and we had to hand over our baby boy Patrick over to our family so that we could be at the Hospital with Amelia."

An aggressive treatment regime was put in place for Amelia. During her many important visits over the next few years, Music Therapists helped soothe the trauma of surgery for treatment by providing fun and diversion. Amelia was a big fan of all things The Children's Hospital at Westmead and there were lots of busy wings and wards around to keep things magical.

"Funding treatment was a big milestone. We celebrated and then had to readjust to 'normal' life. Every day we feel intensely thankful that Amelia responded so well to the treatment she received. We have seen her do everything normal things."

Her enthusiasm for life is infectious and the sound of Amelia and Patrick giggling away as they play together is a magical sound that we will never ever take for granted.

"Having a child go through treatment for cancer is a very difficult way to gain perspective and the ability to appreciate the simple and small things in life."

"We feel so fortunate that we were able to easily access the treatment available at The Children's Hospital at Westmead and developed for Amelia was the same as that available in the leading children's cancer hospitals across the world."

"The wealth of knowledge that all members of the Oncology and Bone Marrow Transplant Teams possessed was an assurance we had always felt confident that any question we had would be answered. We are thankful every day that The Children's Hospital at Westmead exists and is such a wonderful facility."



Published July 2013 | [www.bandagedbear.org.au](http://www.bandagedbear.org.au) | 5

MAGAZINES AND PUBLICATIONS ARE JUST ONE OF OUR SPECIALITIES









## 04

## Commentary & Recommendations

the Team's findings  
derived from cases  
view period. The  
recommendations in a  
workshops and these  
by external  
frontline

findings  
some

rights that  
family violence  
ation and

## Introduction

This chapter sets out findings and recommendations from the cases the Team has reviewed over the past two years. These findings should be read in conjunction with the data findings outlined in chapters 2 and 5 of this report, and the case review summaries set out in chapter 3.

part due to the nature of the review process, this chapter also examines a range of issues that have been the subject of the Team's analysis and recommendations in prior reports. While the Team notes that the NSW Government and relevant agencies have supported the majority of its previous recommendations, it remains that some of these recommendations have not been fully implemented, and there continues to be a lack of clarity around the progress of actions anticipated under the reform. The Team acknowledges that there has been significant reform in the state's response to domestic violence since this review process was established, so some members have expressed their frustration that so many years since the death review process became operational, the Team is now effectively re-making recommendations across a number of areas.

Commitment to change is a commitment to ending violence, and the Team urges those government and non-government stakeholders positioned to respond to domestic and family violence to continue to recognise this need for change and urgently act to end this devastating social harm.

For example, described against the remember, described h sometimes f intervene to p During episod often hide or d meaning that th the house for sp payphone in an domestic violence seeing their moth

30 Humphreys 'Problems in the system of mandatory reporting of children living with domestic violence' (2008) 142-3. *July*  
40 Richards 'Children's Exposure to domestic violence in Australia' Australian Institute of Criminology online, June 2011.  
41 <https://aic.gov.au/publications/tandf/tandf419> (accessed 30 July 2019).

# REPORTS & REVIEWS THAT TELL YOUR STORY





THE INDEPENDENT

# LIQUOR TRADER

BACARDI  
LAUNCH THEIR  
NEW LOOK

PREMIUMISATION  
AND YOUR  
BACK BARI

CELLARMAN  
FEATURE FROM  
SYDNEY'S TOP  
VENUES



## The Hills Are Alive WITH THE SOUND OF CHARDONNAY AND SYRAH

At 200m, Mt. Eddy is the highest peak in all of South Australia. And although this may be considered insignificant by those seeking tall peaks, it is highly significant to those seeking fine Chardonnay and savoury Shiraz.

It has been said that the international success of Australian wine in the 1980s was due, in part, to its ability to capture "something of a place". In essence, the western wine regions of Australia are able to produce wines with great fine flavour – something not emerging from wine consuming society was looking for. What was not recognised at this time was that pure vine Australian wine regions are able to produce wines of great flavour, depth and complexity. Adelaide Hills is a case in point. As a wine growing region, the Adelaide Hills has proved its ability to produce wines that can take on the world, and bear them. It is producing wines with elegant

fruit characters, fine acidity and depth of flavour that are the recognised hallmarks of great quality wines. When to plant and what variety to plant are the most important decisions to be made when choosing to grow a grape vine. Vine balance, berry size, bunch size, exposure to sunlight, heat, these are all factors that need to be managed and manipulated to make fine wine, but key to it all is the site selection. With its diversity of microclimates, the Adelaide Hills has really become an internationally recognised Chardonnay and Shiraz producing region because it offers the right conditions to grow vines that will produce balanced, crisp, good berry size and fine flavours.



**Matt O'Leary**  
WOLF BLOSS  
SENIOR WINE

*...the best accolade is to see someone really enjoying a wine you have put your heart and soul into making.*

Growing up in a family that included wine merchants, a passion for wine was instilled from a young age. In fact, Matt started his early wine career working in a bottle shop while completing a Marketing Diploma. His university degree and work experience saw Matt accept an opportunity at Brandy Cullen Wine and UK. Unfortunately, though, the position fell through and so he landed a job with a computer company instead. As the years passed, however, Matt felt increasingly out of love with the IT industry and strongly in love with wine. In 1997 he was accepted to do a Bachelor of Applied Science (Winemaking) by correspondence. At the same time, a vintage job in the cellar of a winery saw Matt work in Eden Valley. He spent three months picking up rocks in a new vineyard, as well as learning to prune vines. "Grapes are great to win, but the best accolade is to see someone really enjoying a wine that you have put your heart and soul into making."

A cellar position soon opened at Wolf Bloss and, for Matt, the opportunity to work in the laboratory which brought him in contact with the winemakers and their regular vintage tastings. A stint at Krondorf for the 1999 vintage saw Matt promoted to assistant winemaker. He returned to Wolf Bloss the following year, where he has since worked on both red and white wines. Matt is now a Senior Winemaker at Wolf Bloss, with vineyards from the Adelaide Hills to Mount Gambier. Matt loves being able to access wonderful parcels of fruit at Wolf Bloss, and says that it's a fantastic skill to win a trophy for a wine that he's made. But it's an even bigger joy to see people enjoying a Wolf Bloss wine that he's helped create.

### OUTSIDE WORK

Matt reckons that an important part of self-development is being able to appreciate other places and cultures. It's makes sense as an important policy for both personal and professional development, and one he delights in regularly.

**BRING YOUR PRINT  
TO LIFE WITH AN  
ONLINE PUBLICATION**

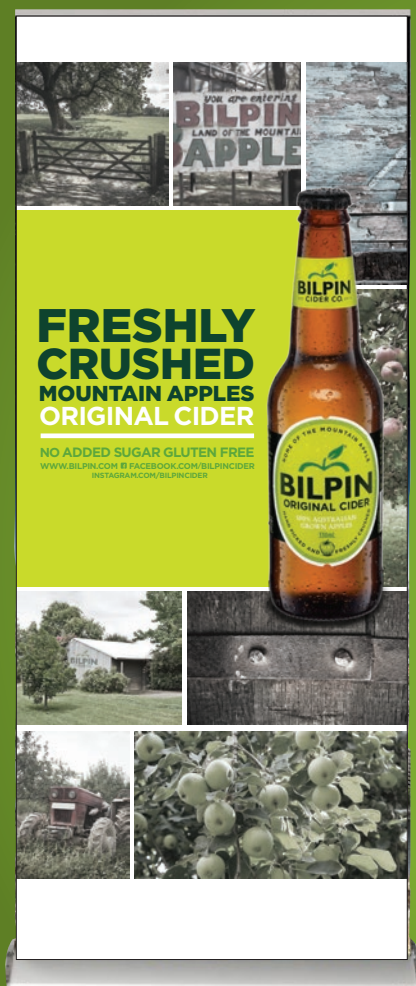






**BUILD A BETTER,  
STRONGER BRAND  
ACROSS ALL MEDIA**





**FRESHLY  
CRUSHED  
MOUNTAIN APPLES  
ORIGINAL CIDER**

NO ADDED SUGAR GLUTEN FREE  
WWW.BILPIN.CO.NZ @FACEBOOK.COM/BILPINCIDER  
INSTAGRAM.COM/BILPINCIDER



**BILPIN CIDER CO. SALES FYD TO FYD**

**THE CIDER MARKET**

- Cider has been the stand out category performer of the alcoholic market in recent years.
- Now accounting for almost 4% of alcohol sales, the category has enjoyed 102% CAGR growth over the past 4 years.
- Craft cider producers are now firmly established as key contributors to this growth.

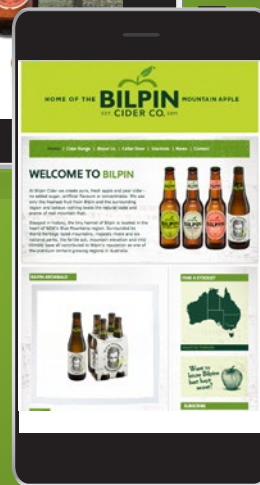
**BILPIN BRAND PROGRESS**

Following the launch of Bilpin Original 120ml bottles in October 2011, the range and distribution has expanded significantly.

**THE FARM AT BILPIN CIDER**

Bilpin Cider Co. is situated at Bilpin in The Blue Mountains, New South Wales region of NSW.

The property includes a restaurant ("The Farm" at Bilpin Cider Co) and opens in the second half of 2014, with a focus on delivering products from our farm and the local New South Wales region. We are planning to expand this to include a wider door and operational delivery in 2015.



**HOME OF THE BILPIN MOUNTAIN APPLE CIDER CO. 2011**

**WELCOME TO BILPIN**

**BILPIN ORIGINAL CIDER**

**BILPIN ORIGINAL CIDER**

**CONSISTENCY  
ACROSS ALL  
PLATFORMS**



**FLYERS &  
BROCHURES FOR  
ANY APPLICATION**



**Floor Care**

Polycure is "the" treated name in timber floor coatings". A division of Mirostone, a company industry leader since the 1980s, Polycure's range of specialist coating technology has been developed in Australia for its application in Australian conditions.

From moisture cure polyurethanes and two-pack polyurethanes to fast dry solvent based finishes, oil finishes and environmentally friendly water based floor coatings, Polycure has a coating system to meet your requirements.

AQUAPRO	Water based coatings
DURAPOL	Moisture cure coatings
POLYTHANE	Two pack polyurethane coatings
NATUBOIL	Oil based coatings
FASTSEAL	Sealers
VOLACARE	Floor maintenance
TAN	Sealer / Moisture Cure Coatings

Polycure floor coatings are quality, hard wearing, tough products that have been designed to give excellent durability and maintenance.

For distributor information, product enquiries & technical advice  
[www.polycure.com.au](http://www.polycure.com.au)  
 ☎ +61 2 9795 3700 ☎ +61 2 9771 3601  
 ✉ marketing@mirostone.com.au  
 Manufactured by Mirostone Pty Ltd  
 21 Mangold Street, Roseville NSW 2122  
 Find us on

**TIMBER FLOORS WHAT TO EXPECT**  
 A guide to the care and maintenance of timber coated floors.

**What can be done to improve your bones and manage your osteoporosis?**

• Eat a healthy diet with at least 3 servings of dietary calcium

1 serve = 40g cheese, 250ml regular, reduced or low fat milk, 200g yogurt, it is recommended that you attempt to get your daily calcium intake from diet.

Vitamin D is important for the absorption of calcium in the body. Vitamin D is recommended that you limit your risk of skin damage by getting exposure before 10am and after 2pm.

• Regular weightbearing exercise such as walking and excessive alcohol

The longer you live the more likely you are to develop osteoporosis. If you answer yes to any of the questions following, you may be at risk of getting osteoporosis and we recommend that you consult your doctor, who will advise whether further tests are necessary.

**International Osteoporosis Foundation One minute Osteoporosis risk test**

	Yes	No
Have either of your parents broken a hip (after a minor bump or fall)?	<input type="checkbox"/>	<input type="checkbox"/>
Have you broken a bone after a minor bump or fall?	<input type="checkbox"/>	<input type="checkbox"/>
For women: Did you undergo menopause before the age of 45?	<input type="checkbox"/>	<input type="checkbox"/>
For women: Have your periods stopped for 12 months or more other than because of pregnancy?	<input type="checkbox"/>	<input type="checkbox"/>
For men: Have you ever suffered from impotence, lack of libido or other symptoms relating to low testosterone levels?	<input type="checkbox"/>	<input type="checkbox"/>
Have you ever taken corticosteroid tablets (cortisone, prednisone etc) for more than 3 months?	<input type="checkbox"/>	<input type="checkbox"/>
Have you lost more than 3 cm in height?	<input type="checkbox"/>	<input type="checkbox"/>
Do you regularly drink alcohol heavily (in excess of safe drinking limits)?	<input type="checkbox"/>	<input type="checkbox"/>
Do you smoke more than 20 cigarettes a day?	<input type="checkbox"/>	<input type="checkbox"/>
Do you suffer frequently from diarrhoea (caused by problems such as Crohn's disease or Celiac's disease)?	<input type="checkbox"/>	<input type="checkbox"/>

**Could you have Osteoporosis?**

**Ryan's LAWN MAINTENANCE**  
 law 603360666

Servicing the Illawong area. Offering competitive pricing & great service!

- mowing
- edging
- trimming
- blowing
- pruning
- cleanups

and much more...

CALL NOW FOR A QUOTE!  
**0419 406 671**  
 Wendy & Ryan

**Ryan's LAWN MAINTENANCE**  
 law 603360666  
 0419 406 671

**Ambius Tambour Unit**

Colour range, that complements and colour palette.

Unit	Unit Type	Unit Size	GROW POT SIZE
1000	900	450	200
1500	900	650	3 x 200

• *Chlorophytum fragrans 'Golden Heart'* (formerly *Chlorophytum comosum* 'Jaret Craig', aka 'Zarabzar' gem)

ambius

accessories:  
 Ambius Tambour  
 Assembly - a more effective solution





Uncertainty doesn't  
belong in your  
Data Centre.

The world is moving faster than ever, and it's no secret that technology is driving that speed. In every industry, IT strategy is now business strategy. Winners and losers are decided by how quickly they can adapt to stay ahead.

Whilst many of our established competitors and start ups are sorting out their future, Hewlett Packard Enterprise will continue to advance our technology leadership in key areas like converged infrastructure, private cloud and the all-flash data centre.

Don't be a risk taker. Let Hewlett Packard Enterprise help you accelerate and defy business as usual.

Find out more, visit [hpe.com](http://hpe.com)

 **Hewlett Packard  
Enterprise**

© Copyright 2015 Hewlett Packard Enterprise Development LP

 **Hewlett Packard  
Enterprise**



## Microsoft Ignite 2016 Delegate Deal

**50% OFF**  
any Aruba  
Instant product  
(indoor and outdoor)

Aruba, a Hewlett Packard Enterprise company, is a leading provider of next-generation network access solutions for the mobile enterprise, and to welcome delegates to Microsoft Ignite NZ we are offering a range of Aruba Instant products at an incredible 50% off!

There's no easier way to get enterprise-grade Wi-Fi up and running. Aruba Instant delivers the only controllerless Wi-Fi solution that is easy to set-up, and loaded with security and smarts needed to accelerate your business without breaking your budget.

### Aruba Instant Solution benefits:

- Easy to deploy Aruba Wireless Network.
- Up to 10 times faster download speed in high-density environments, zero touch setup.
- Simple network management or cloud management.
- Always-on security, strong over-the-air encryption and an integrated firewall including secure guest access.
- No software to buy, no licenses, no hardware appliances.

Buy now at the HPE SMB Marketplace, visit [marketplace.hpe.com](http://marketplace.hpe.com)

# WE GET TO KNOW YOUR BRAND

  
**Hewlett Packard**  
Enterprise

# HPE ProLiant ML350 Gen9 Server - 2 for 1 Offer

**Do you need to increase your business productivity and improve operations while balancing your employees' mobility, security and collaboration needs, all within your limited IT budget?**

HPE ProLiant ML350 Gen9 Server delivers a class-leading combination of performance, expandability, manageability, reliability and serviceability making it the choice for enterprise data centres, expanding SMBs and remote offices of larger businesses.

ML350 Gen9 Server leverages the Intel® Xeon® E5-2600 v3 processors with up to 70% performance gain, plus the latest HPE DDR4 SmartMemory offering up to 14x performance increase.



### What's new

- Support 64 GB DDR4 RDIMM, maximum memory capacity of 1.5 TB.
- Support up to six NVMe PCIe Solid State Drives thru SFF Express Bay Kit (76550-027), drive capacity/each: 400 GB, 800 GB & 1.2 TB.
- 6 or 8 TB Large Form Factor (LFF SATA) Hard Disk Drives, maximum LFF storage capacity up to 192 TB.
- 2 TB Small Form Factor (SFF SAS) Hard Disk Drives, maximum SFF storage capacity up to 96 TB.
- Graphic support of NVIDIA® M6000 and AMD® FirePro® W7100.

### BUNDLE DESCRIPTION

**HPE ML350 Gen9 E5-2620v3 SP1247NZ Server (L9C53A)**

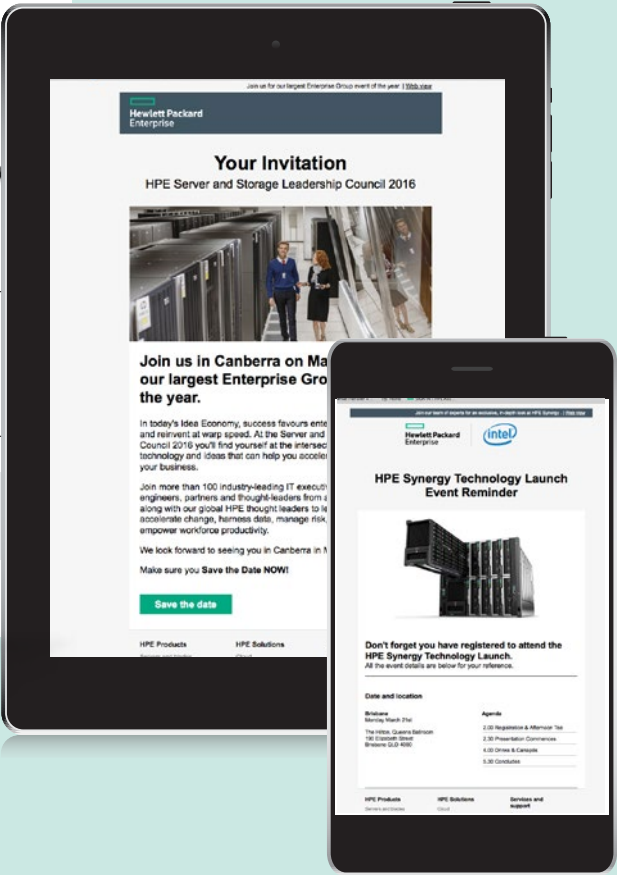
**+ BONUS**

**HPE ML350T09 E5-2620v3 SFF Base AP Server (765820-371)**

**\$8,033.00** (MSRP (ex. GST))

**For a limited time, receive a BONUS\* ProLiant ML350 Server valued at \$4,159 with every ML350 Gen9 Pre-install server purchased. To take advantage of this outstanding offer, contact your authorised HPE Partner or your HPE representative today. Be quick, this is a limited time offer and only valid while stocks last.**

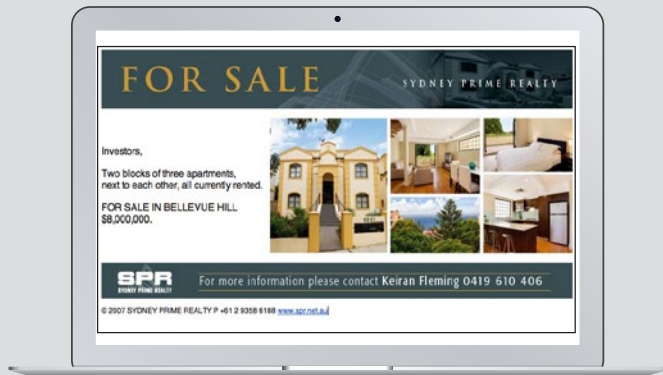
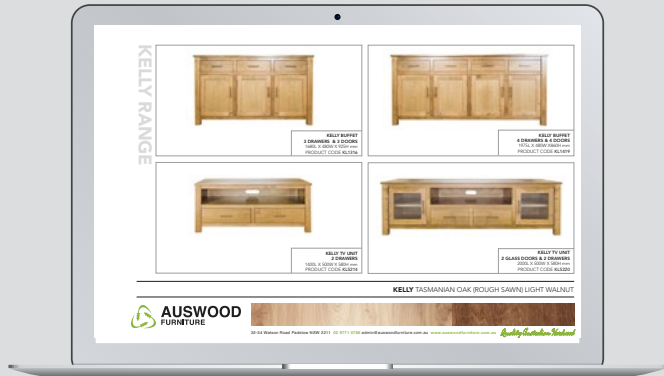
Visit [hpe.com/au/compute](http://hpe.com/au/compute) for more information on HPE ProLiant Servers.

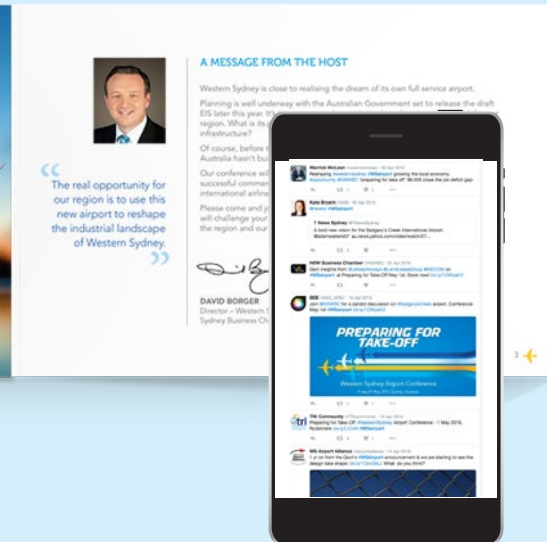




**WEBSITES, SOCIAL  
MEDIA, EDMS AND  
EVERYTHING ONLINE**







PRINT TO  
ONLINE



February 2016  
R.E: Safety Rules Booklet & Contract Resources Commitments

Dear Team,

Where we came from says a lot about who we are today. We're continually evolving and we have, and continue to strive to 'set new standards' in everything we do. With this in mind we are pleased to launch the **8 Contract Resources Commitments** and a global version of the **Safety Rules Booklet**.

- The **Safety Rules Booklet** supports our 'Zero Harm' philosophy. We have addressed behaviours and work practices that can lead to accidents and injuries so you can regularly use this as a reference for all of our core activities. It was formed with input from the Contract Resources' community including our technical and operational staff, HSE team, project managers and the three of us.
- The **8 Contract Resources Commitments** help us to focus on re-occurring incidents across our business. If each and every one of us commit, we will make a positive change to our safety and wellbeing on a global scale and stop the same incidents from happening over and over again.

If you are like most of us, and you are always wanting to do better, then this is an ideal opportunity to stop and think about your current work practice habits and behaviours and decide how you can improve on those, for your own safety and others around you.

There is nothing more important than making sure everyone gets home safely at the end of each work day.

Yours faithfully,

Andy Wells  
CEO



Trevor Penny  
Founder



Gray Gardner  
Founder



**Mike Rooney**  
Regional Manager East  
88 Lavarack Avenue  
Eagle Farm, QLD 4009  
Tel. +61 07 3268 8701  
Fax: +61 07 3268 8799  
Email: mrooney@contractresources.com.au  
www.contractresources.com.au



Scan to add contact details  
for Mike Rooney

AUSTRALIA | NEW ZEALAND | MIDDLE EAST | USA | CHILE

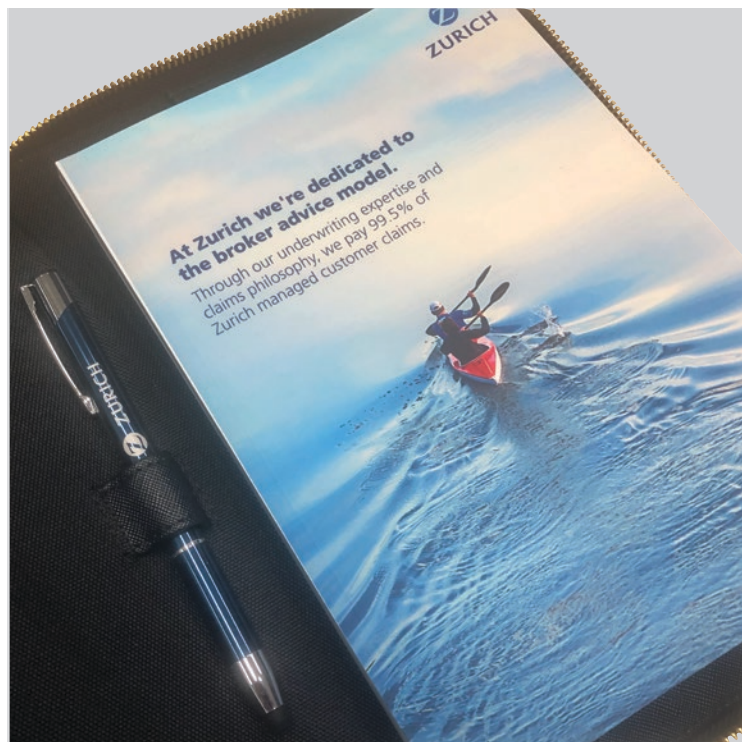


SETTING NEW STANDARDS





**CORPORATE  
DESIGN**



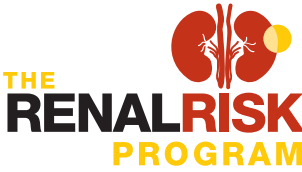




**PACKAGING &  
LABEL SOLUTIONS**







# XGEVA<sup>®</sup> (denosumab) Home Injection Guide for Carers

## Preparing for injection using the XGEVA<sup>®</sup> vial

- 1 Set up the equipment in a clean environment. You will need a syringe that will hold 1.7mL, a drawing up needle (approximately 18G) and an administering needle (21G or larger (e.g. 25G)). Remove the vial of XGEVA<sup>®</sup> from the refrigerator 20 to 30 minutes before the injection is due, allowing it to reach room temperature. Use the XGEVA<sup>®</sup> vial and supplied equipment once only.
- 2 Wash and thoroughly dry your hands with a paper towel or a clean cloth (Fig 1).
- 3 Flip the protective cap off the XGEVA<sup>®</sup> vial (Fig 2).
- 4 With the drawing up needle attached to the syringe, carefully remove the needle shield and gently push the needle through the rubber top of the XGEVA<sup>®</sup> vial (Fig 3).
- 5 Turn the vial and syringe upside down and slowly pull back on the plunger to draw all of the vial contents into the syringe (Fig 4). Remove the needle from the vial.
- 6 Remove the drawing up needle and dispose of it in the sharps disposal container. Attach the administering needle. Check the syringe for needle air bubbles. Large bubbles will need to be removed by slightly tapping on the syringe until the bubbles dissolve.

## Administering subcutaneous XGEVA<sup>®</sup>

**Disposable gloves should be worn by the person who administers the injection.**

The XGEVA<sup>®</sup> injection is given beneath the skin (subcutaneous) and should not be painful, although it may produce a stinging sensation on administration.

XGEVA<sup>®</sup> injections can be given straight in at a 90 degree angle or at a 45 degree angle.

**The sites for injection of XGEVA<sup>®</sup> are:**

- UPPER OUTER ARMS
- ABDOMEN
- UPPER OUTER THIGHS

**DO NOT** inject into areas where the skin is tender, bruised, red, or inflamed. Avoid injecting into areas with scars or stretch marks. Also, these injection sites should be rotated.

- 1 Thoroughly wash and dry your skin before administration.
- 2 Wipe the area where you plan to give the injection with an alcohol swab, let dry and do not touch (Fig 5).
- 3 Hold the syringe and push the needle into the skin. Once the needle is all the way in, inject the XGEVA<sup>®</sup> by pushing the plunger all the way down with a firm and constant pressure (Fig 6).
- 4 Once the injection is completed, lift the syringe off the skin and immediately place the needle and syringe in the sharps disposal container. Do not re-use the needles and syringe.
- 5 Do not massage the injection site or massage the skin.
- 6 If there is blood at the injection site, wipe with a cotton ball or gauze pad on the skin.
- 7 Apply a plaster if needed.
- 8 Keep the cartridges and sharps disposal container out of sight and reach of children.

**Fig 1.** Washing hands.

**Fig 2.** Removing cap from vial.

**Fig 3.** Inserting needle into vial.

**Fig 4.** Drawing up contents.

**Fig 5.** Preparing injection site.

**Fig 6.** Administering injection.

**Fig 7.** Disposing of sharps.

**Fig 8.** Applying plaster.

**Fig 9.** Final disposal.

**Fig 10.** Final disposal.

**Fig 11.** Final disposal.

**Fig 12.** Final disposal.

**Fig 13.** Final disposal.

**Fig 14.** Final disposal.

**Fig 15.** Final disposal.

**Fig 16.** Final disposal.

**Fig 17.** Final disposal.

**Fig 18.** Final disposal.

**Fig 19.** Final disposal.

**Fig 20.** Final disposal.

**Fig 21.** Final disposal.

**Fig 22.** Final disposal.

**Fig 23.** Final disposal.

**Fig 24.** Final disposal.

**Fig 25.** Final disposal.

**Fig 26.** Final disposal.

**Fig 27.** Final disposal.

**Fig 28.** Final disposal.

**Fig 29.** Final disposal.

**Fig 30.** Final disposal.

**Fig 31.** Final disposal.

**Fig 32.** Final disposal.

**Fig 33.** Final disposal.

**Fig 34.** Final disposal.

**Fig 35.** Final disposal.

**Fig 36.** Final disposal.

**Fig 37.** Final disposal.

**Fig 38.** Final disposal.

**Fig 39.** Final disposal.

**Fig 40.** Final disposal.

**Fig 41.** Final disposal.

**Fig 42.** Final disposal.

**Fig 43.** Final disposal.

**Fig 44.** Final disposal.

**Fig 45.** Final disposal.

**Fig 46.** Final disposal.

**Fig 47.** Final disposal.

**Fig 48.** Final disposal.

**Fig 49.** Final disposal.

**Fig 50.** Final disposal.

**Fig 51.** Final disposal.

**Fig 52.** Final disposal.

**Fig 53.** Final disposal.

**Fig 54.** Final disposal.

**Fig 55.** Final disposal.

**Fig 56.** Final disposal.

**Fig 57.** Final disposal.

**Fig 58.** Final disposal.

**Fig 59.** Final disposal.

**Fig 60.** Final disposal.

**Fig 61.** Final disposal.

**Fig 62.** Final disposal.

**Fig 63.** Final disposal.

**Fig 64.** Final disposal.

**Fig 65.** Final disposal.

**Fig 66.** Final disposal.

**Fig 67.** Final disposal.

**Fig 68.** Final disposal.

**Fig 69.** Final disposal.

**Fig 70.** Final disposal.

**Fig 71.** Final disposal.

**Fig 72.** Final disposal.

**Fig 73.** Final disposal.

**Fig 74.** Final disposal.

**Fig 75.** Final disposal.

**Fig 76.** Final disposal.

**Fig 77.** Final disposal.

**Fig 78.** Final disposal.

**Fig 79.** Final disposal.

**Fig 80.** Final disposal.

**Fig 81.** Final disposal.

**Fig 82.** Final disposal.

**Fig 83.** Final disposal.

**Fig 84.** Final disposal.

**Fig 85.** Final disposal.

**Fig 86.** Final disposal.

**Fig 87.** Final disposal.

**Fig 88.** Final disposal.

**Fig 89.** Final disposal.

**Fig 90.** Final disposal.

**Fig 91.** Final disposal.

**Fig 92.** Final disposal.

**Fig 93.** Final disposal.

**Fig 94.** Final disposal.

**Fig 95.** Final disposal.

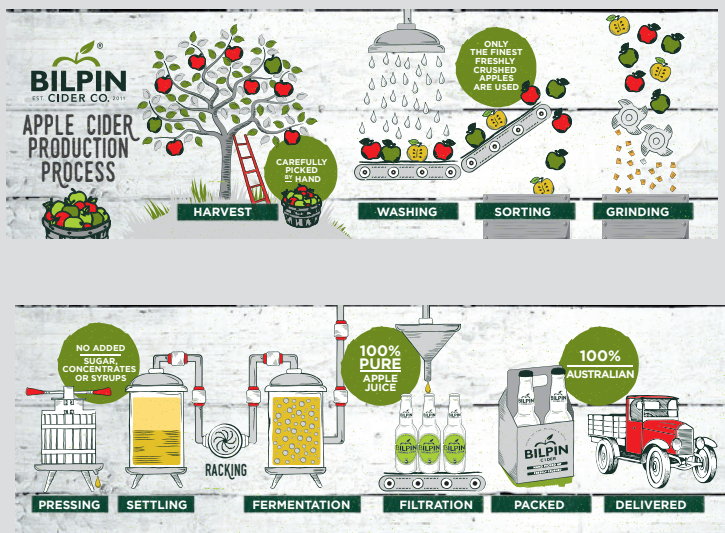
**Fig 96.** Final disposal.

**Fig 97.** Final disposal.

**Fig 98.** Final disposal.

**Fig 99.** Final disposal.

**Fig 100.** Final disposal.







myLearning  
Pest Aware Training Programs

**Rentokil**  
The Experts in Pest Control

BED BUGS  
BIRDS  
SPIDERS  
ANTS, BEES & WASPS





GRAPHIC DESIGN | OFFSET PRINTING | DIGITAL PRINTING  
DIRECT MAIL | MAILING & DISTRIBUTION | ONLINE PORTAL

**Planet Press Pty Ltd**

18 Sheridan Close Milperra NSW 2214

Phone 02 9771 4711

[info@planetpress.com.au](mailto:info@planetpress.com.au)

[www.planetpress.com.au](http://www.planetpress.com.au)

